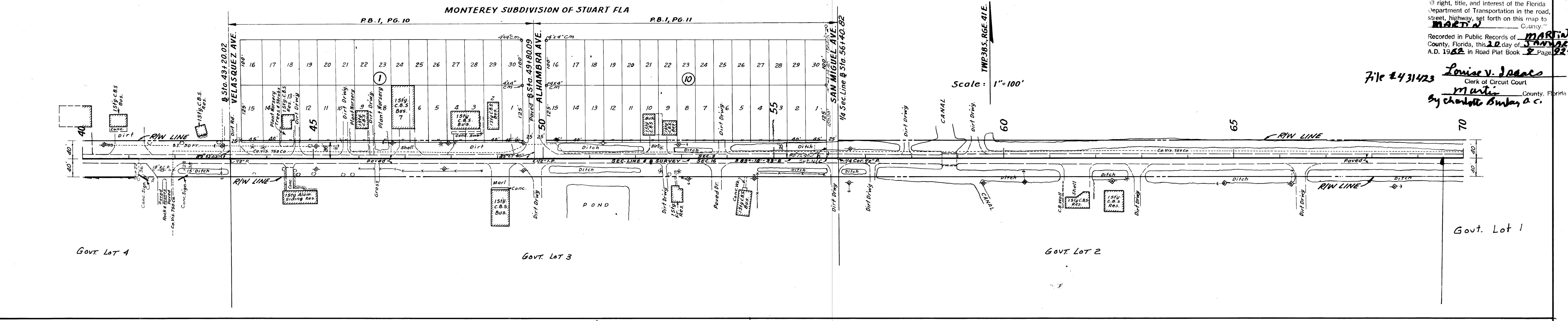
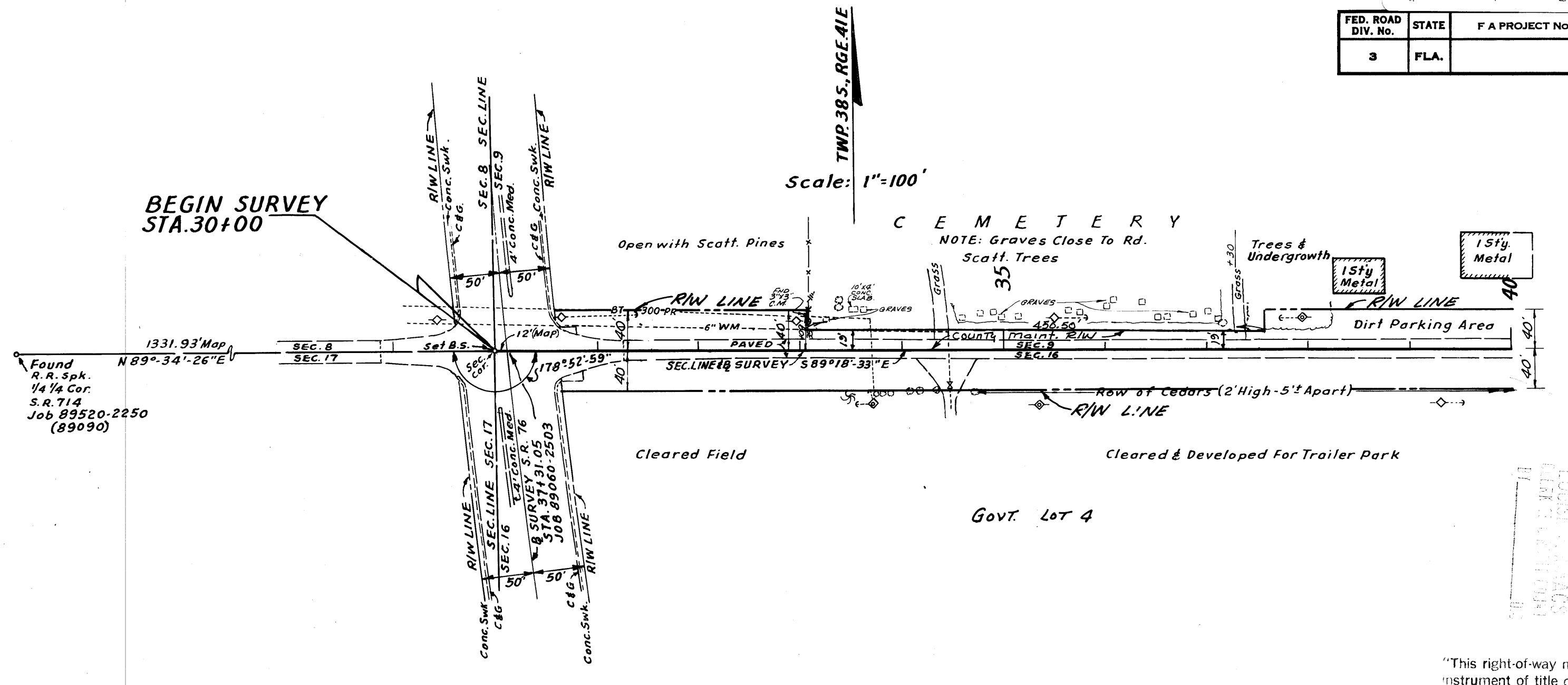
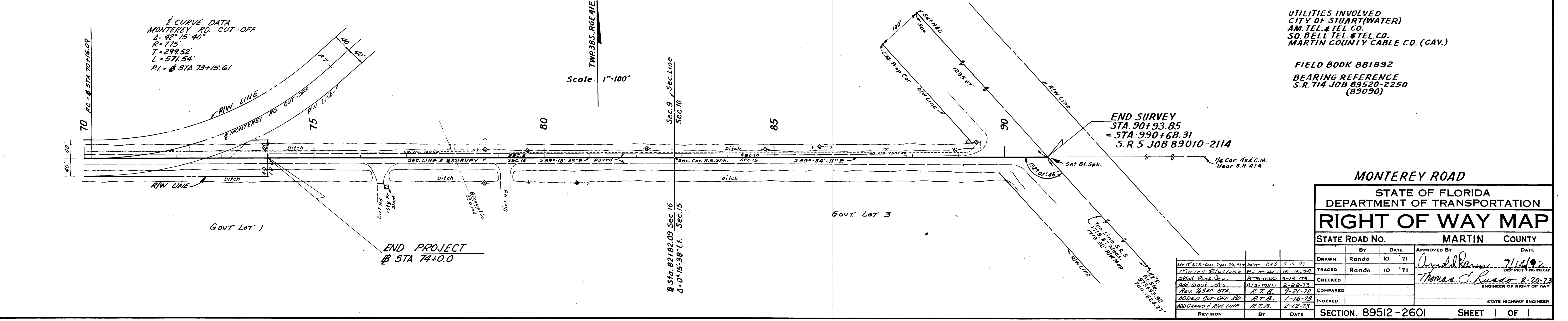


NOTE:
 MONTEREY ROAD FROM S.R. 76 TO U.S. 1 HAS BEEN MAINTAINED FOR AT LEAST 4 YEARS BY MARTIN COUNTY ROAD DEPARTMENT (ROAD-SURFACE ONLY) SEE ATTACHED LETTER AND AFFIDAVIT.



"This right-of-way map when recorded is an instrument of title conveyance, transferring in accordance with Florida Statutes 337.20 (1977) all right, title, and interest of the Florida Department of Transportation in the road, street, highway, set forth on this map to MARTIN County, Florida, this 12 day of January A.D. 1982 in Road Plat Book 9 Page 922

Recorded in Public Records of MARTIN County, Florida, this 12 day of January A.D. 1982 in Road Plat Book 9 Page 922
 Louise V. Jones
 Clerk of Circuit Court
 Martin County, Florida
 By Charlotte Sumbay, a.c.



UTILITIES INVOLVED
 CITY OF STUART (WATER)
 AM. TEL. & TEL. CO.
 SO. BELL TEL. & TEL. CO.
 MARTIN COUNTY CABLE CO. (CAV.)

FIELD BOOK 881892
 BEARING REFERENCE
 S.R. 714 JOB 89520-2250
 (89090)

MONTEREY ROAD			
STATE OF FLORIDA			
DEPARTMENT OF TRANSPORTATION			
RIGHT OF WAY MAP			
STATE ROAD NO.		MARTIN COUNTY	
BY	DATE	APPROVED BY	DATE
DRAWN Rando	10 '71	Thomas C. Luster	7/14/82
TRACED Rando	10 '71	DISTRICT ENGINEER	
CHECKED		ENGINEER OF RIGHT OF WAY	
COMPARED			
INDEXED			
REVISION	BY	DATE	
1. DRAINED RW LINE	R. M. C.	10-10-79	
2. ADDED PROP. COR.	R. M. C.	2-18-79	
3. ADDED GOVT. LOTS	R. T. B.	2-28-79	
4. REV. 4th SEC. STA.	R. T. B.	7-21-79	
5. ADDED CUT-OFF RD.	R. T. B.	1-14-79	
6. ADDED GOVT. LOTS	R. T. B.	2-12-79	